


Applies To: **2000-01 S2000 – ALL**
October 31, 2000

Water Drips on the Passenger's Carpet

SYMPTOM

In humid conditions, with the A/C on and the fan running at maximum speed, water drips on the passenger's carpet.

PROBABLE CAUSE

When the fan is running at maximum speed, water condensed on the evaporator core can blow into the heater unit. The heater unit does *not* have a drain to remove collected water. Water collects on the bottom of the heater unit and leaks from the lower seam in the housing.

CORRECTIVE ACTION

Seal the heater unit.

REQUIRED MATERIALS

3M Weatherstrip Adhesive: P/N 051135-08011

Dow Corning 111 Silicone Paste: P/N DC 111

WARRANTY CLAIM INFORMATION

In warranty: The normal warranty applies.

Operation Number: 611010

Flat Rate Time: 2.0 hours

Failed Part: P/N 79100-S2A-A01
H/C 6242689

Defect Code: 059

Contention Code: B06

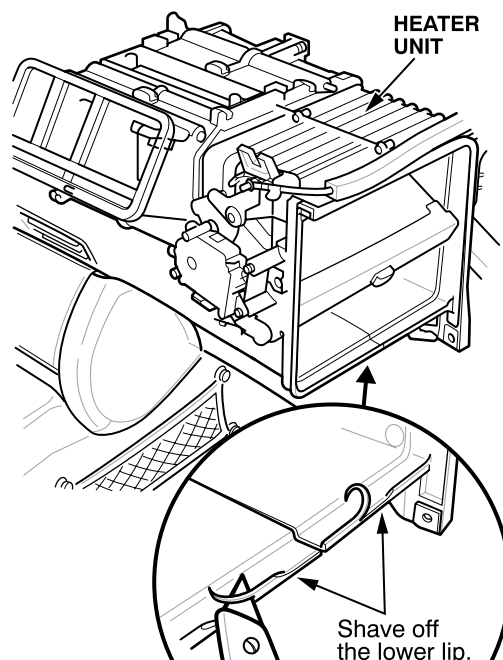
Template ID: 00-083A

Skill Level: Repair Technician

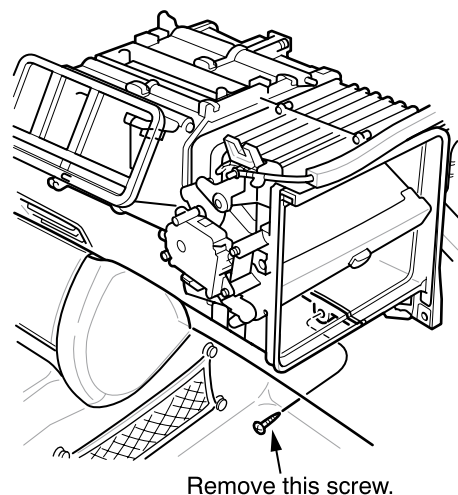
Out of warranty: Any repair performed after warranty expiration may be eligible for goodwill consideration by the District Service Manager or your Zone Office. You must request consideration, and get a decision, before starting work.

REPAIR PROCEDURE

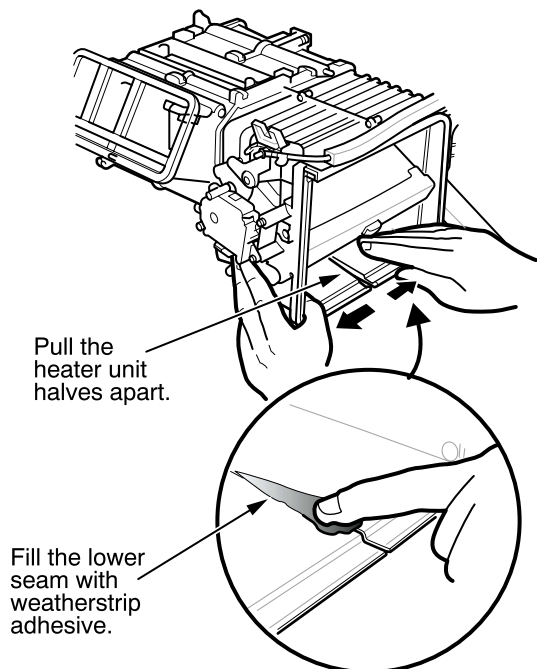
1. Remove the blower/evaporator unit to access the heater unit opening (see page 21-38 of the 2000-01 S2000 Service Manual).
2. Use a utility knife to carefully shave off the lower lip of the heater unit opening where it joins the blower/evaporator unit.



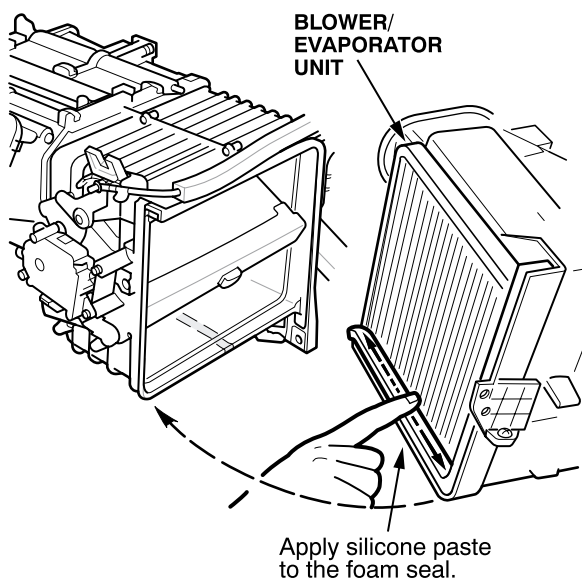
3. Remove the front screw from the bottom of the heater unit.



4. While gently pulling the heater unit halves apart, fill the lower seam from inside the unit with weatherstrip adhesive.



5. Reinstall the screw, and let the adhesive cure for 20 minutes.
6. Spread a generous amount of silicone paste on the foam seal of the blower/evaporator unit opening.



7. Carefully reinstall the blower/evaporator unit, making sure to get a tight seal with the paste on the foam seal.
8. Evacuate and recharge the A/C system (see pages 21-55 and 21-56 of the service manual).
9. Start the engine, and run the A/C to make sure it works properly.